



Among Us Crewmate felt handwarmer Activity Kit



Materials Included:

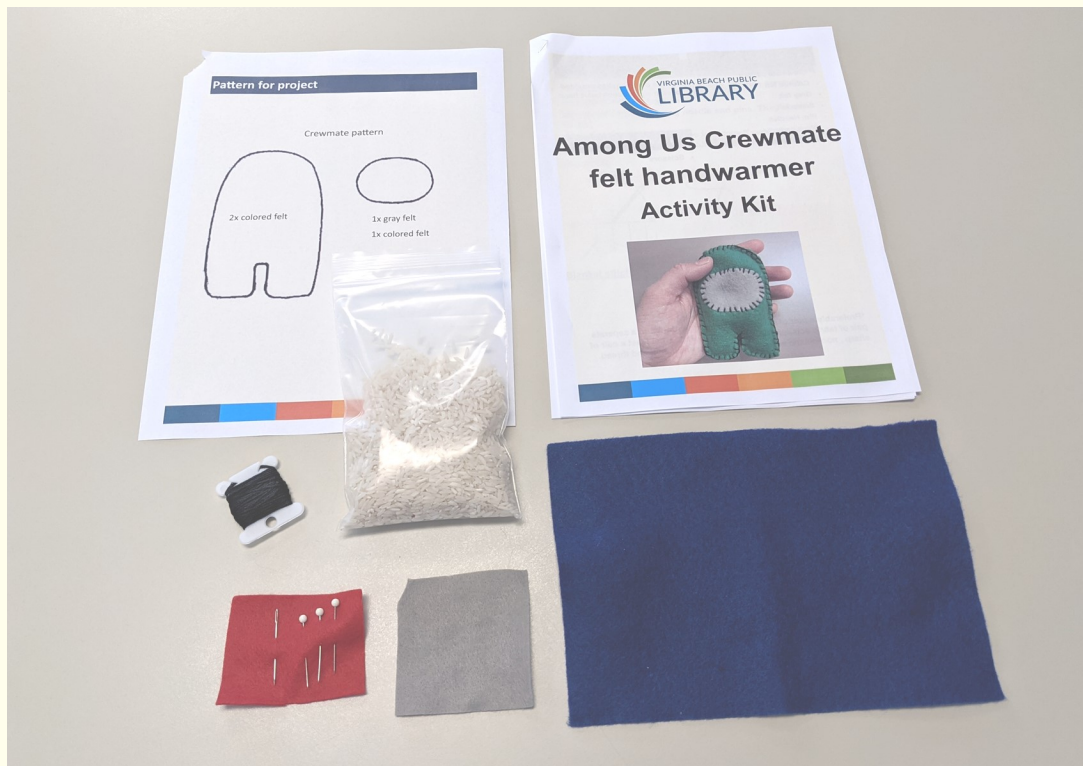
- Crewmate pattern
- Colored felt
- Gray felt
- Scrap felt
- Pin, Needles
- Black embroidery floss
- Uncooked rice

Objective(s):

Use the craft supplies provided to learn and practice basic hand sewing to make a handwarmer.

Provide Your Own:

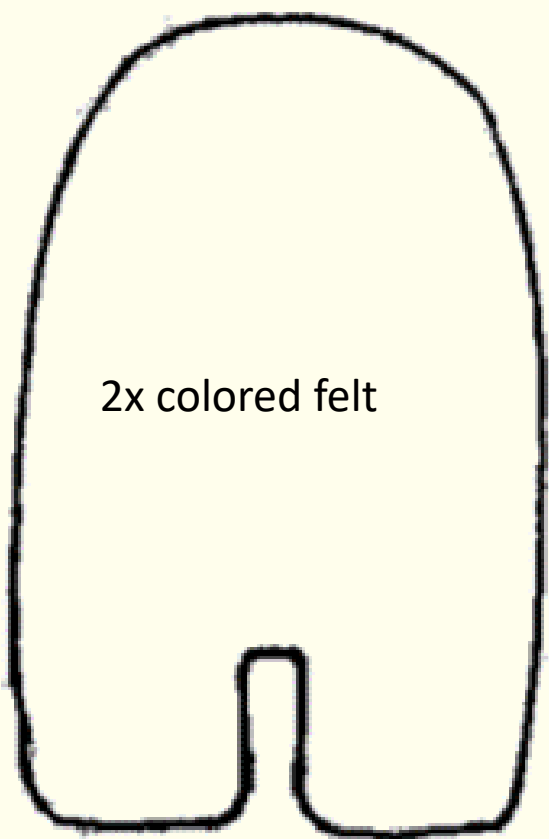
- Scissors*



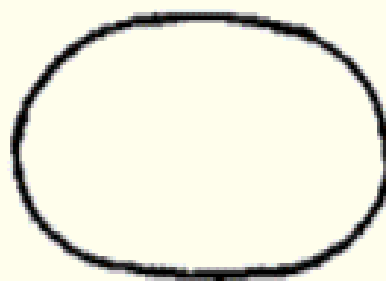
***Preferably a pair of scissors to cut your pattern and a separate pair of fabric scissors to cut felt and thread. Or at least a pair of sharp , non-plastic scissors to cut the pattern, felt, and thread.**

Pattern for project

Crewmate pattern



2x colored felt



1x gray felt

1x colored felt

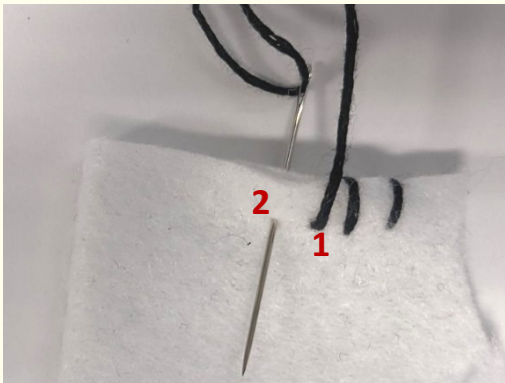


Before you start

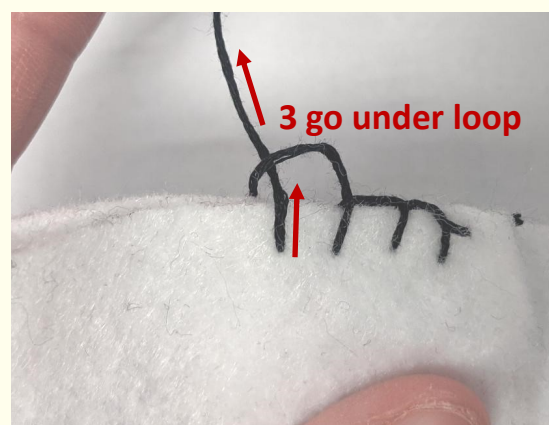
- Please take your time, and make your stitches carefully.
- Be patient with yourself.
- Be careful with the sewing needle and pins. They can be sharp!

Stitches to know: Practice on the felt scrap, if needed. Feel free to check YouTube videos for tutorials on either stitch.

Whip stitch



Blanket stitch (Check this link for detailed instructions <http://www.holiday-crafts-and-creations.com/how-to-do-blanket-stitch.html>)

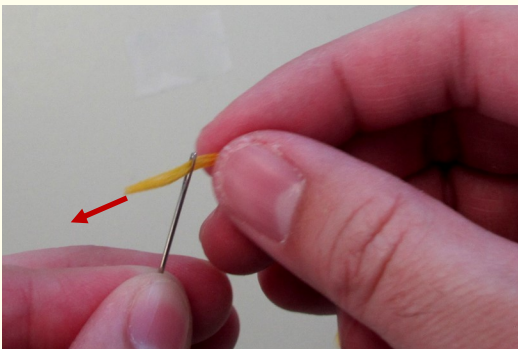


Before you start

Sewing basics

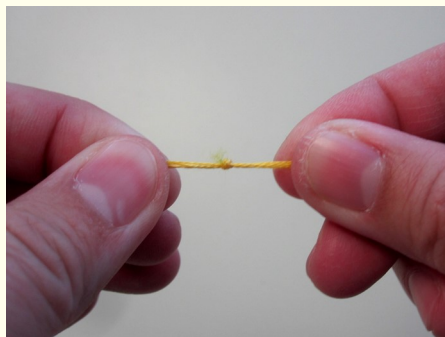
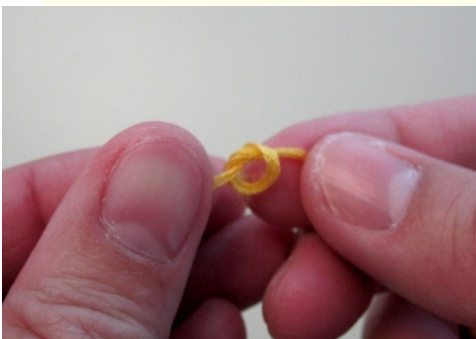
Threading a needle:

- Use a little water to dampen one end of the thread, if needed, to make it easier to go through the eye of the needle (opening).
- Hold the dampened end of the thread in one hand between finger and thumb. Use the other hand to hold the needle.
- Put the whole dampened end of the thread carefully through the eye of the needle.
- Tie 2-3 simple knots at the end of the tail (other end of the thread).



Tying a knot:

- Tie a simple knot on the tail of the thread after threading a needle or to finish a project
- It may require 2-3 knots over the same spot to make a bigger knot



Before you start

Sewing basics

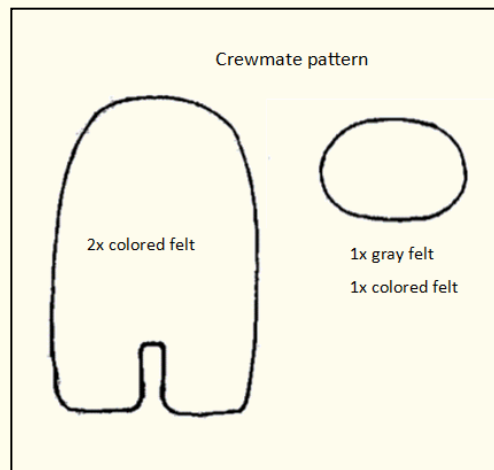
Pinning pieces together:

- Some projects require pinning a paper pattern to fabric, pinning 2 pieces of fabric together, or pinning smaller parts to a larger shape to hold the pieces together while you cut (for the pattern) or while you sew.
- For the paper pattern on fabric, make sure the pattern covers the whole piece of fabric.
- For 2 pieces of fabric, make sure both pieces are even. Also, depending on your project, pay attention to which piece is the front.
- Take a sewing pin, press the sharp end through the front layer and out the back layer, then bring the sharp end through the back to the front. Straighten out the fabric, so it is not bunched up around the pin.



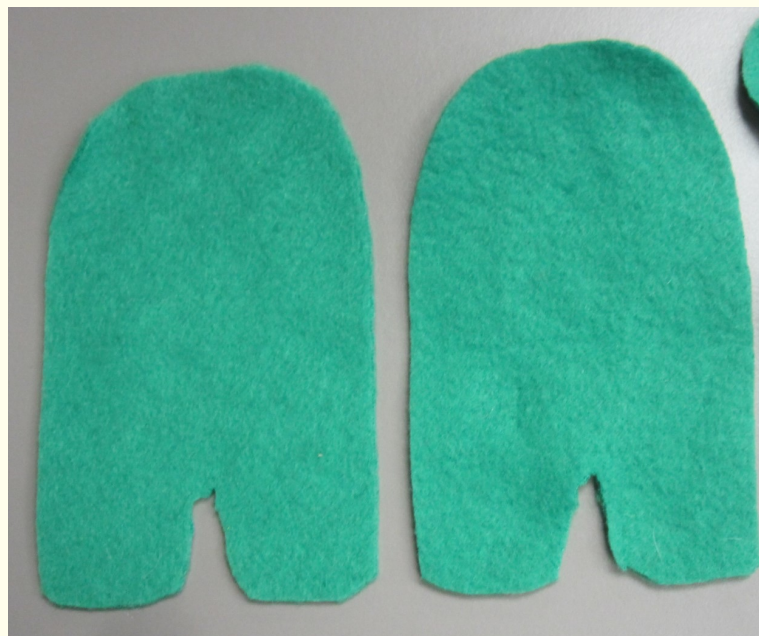
Directions:

Step 1: Use regular scissors to carefully cut out the paper pattern.



Step 2: Cut out 2 pieces of the colored felt for the Crewmate's body.

- Fold the colored felt in half just enough for the pattern, place the pattern over the felt (making sure the paper pattern covers the felt completely), and pin the pattern to the felt. Leave enough felt to cut a piece for the backpack.
- Carefully cut out the felt pieces with fabric scissors, avoiding jagged edges.



Directions:

Step 3: Cut out 1 oval out of the gray felt for the shield and 1 oval from the colored felt for the backpack..

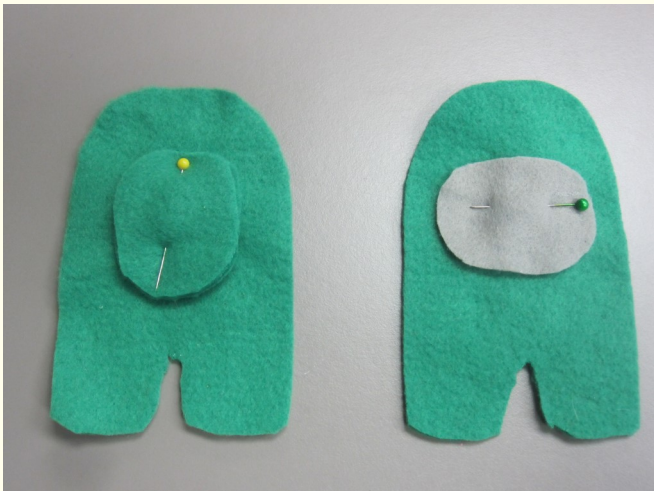
- Place the oval pattern over the colored felt (making sure the paper pattern covers the felt completely), and pin the pattern to the felt.
- Carefully cut out the felt pieces with fabric scissors, avoiding jagged edges.
- Repeat above with gray felt.



Directions:

Step 4: Use a whip stitch to attach the shield to one Crewmate body and the backpack to the second Crewmate body.

- Position the shield on the Crewmate body. Pin pieces together with a pin.
- Thread the needle with 2 feet of black thread.
- Start at the bottom of the oval with the needle going from the back to the front layer (so the knot is on the back).
- Use a whip stitch to sew around oval. Keep stitches small, even, and neat.
- Re-thread as necessary.
- To finish, tie 2-3 simple knots on top of each other on the back.
- Repeat for backpack piece.



Directions:

Step 5: Place the two Crewmate body pieces together (oval pieces facing out on both pieces), and sew together with a blanket stitch, leaving a 1-2 inch opening along the side.

- Stack the Crewmate body pieces (ovals on the outside), and make sure they are even. Pin pieces together with a few pins.
- Thread the needle with 2 feet of black thread.
- Start at the side of the Crewmate with the needle going from the inner side of the front layer to the outside of it (so the knot is on the inside).
- Use a blanket stitch to sew around the body just inside the edge (about 0.25 inches in). Keep stitches small, even, and neat.
- Re-thread as necessary.
- Leave a 1-2 inch opening along the top. Leave the thread and needle attached to close the opening after filling.



Directions:

Step 6: Stuff the feltie through the opening you left with uncooked rice.



Step 7: Use a blanket stitch to close the opening with the remaining thread. Use the remaining thread, or rethread, if needed.

- Continue sewing blanket stitches from where you left off.
- When the opening is closed, tie 2-3 simple knots top of each other on the back of the feltie. Trim off excess thread.



Congratulations on completing your handwarmer! To use as a handwarmer, just microwave for 15-20 seconds.

Additional Resources:

Find live programs, on-demand programs, and downloadable activity kits at [VBgov.com/library-programs](https://www.vbgov.com/library-programs).

Please share your photos of these activities with us on social media.



Thank you!

Funding for this project is provided by Friends of Virginia Beach Public Library

